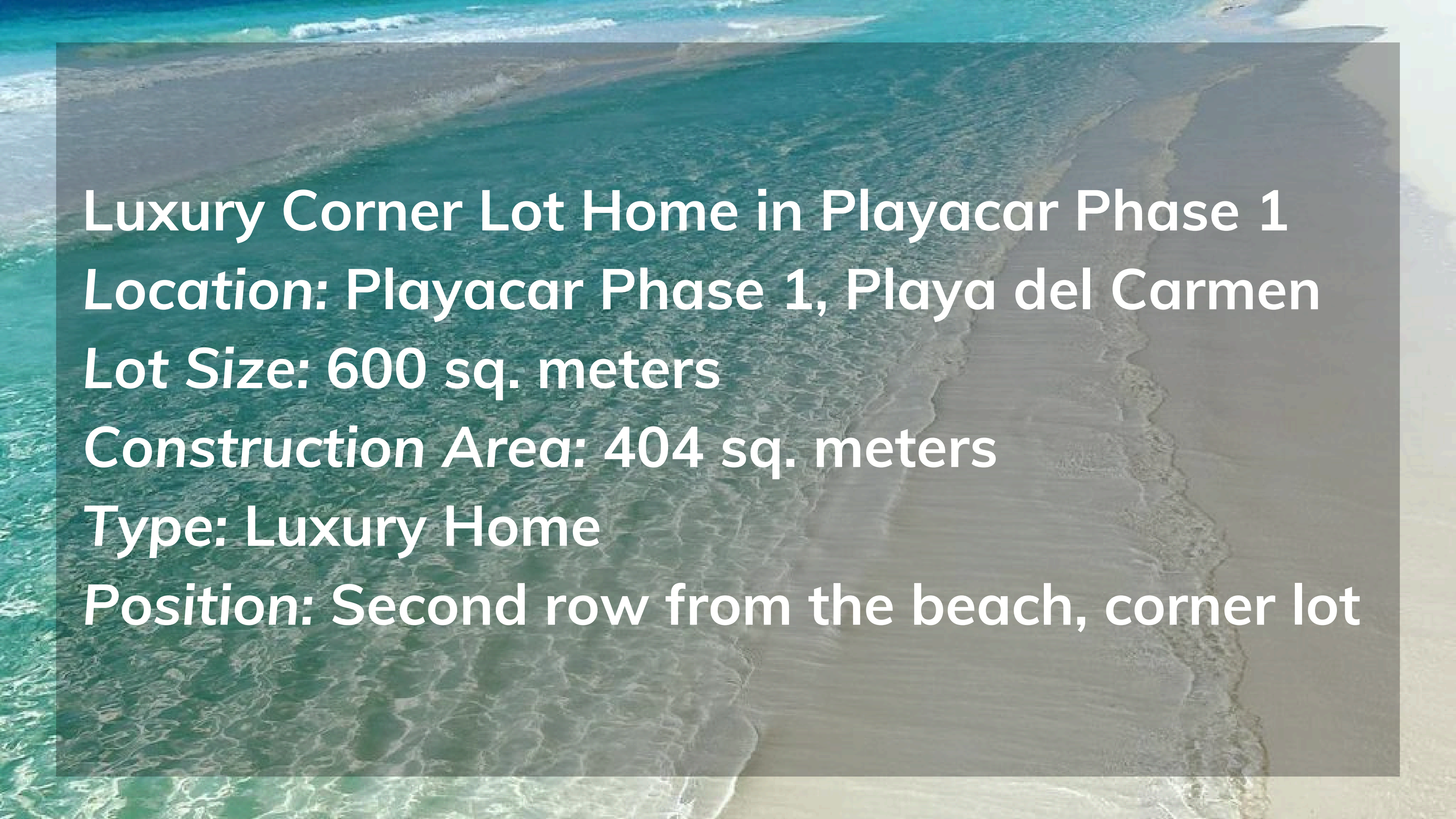


# Playacar

F A S E 1

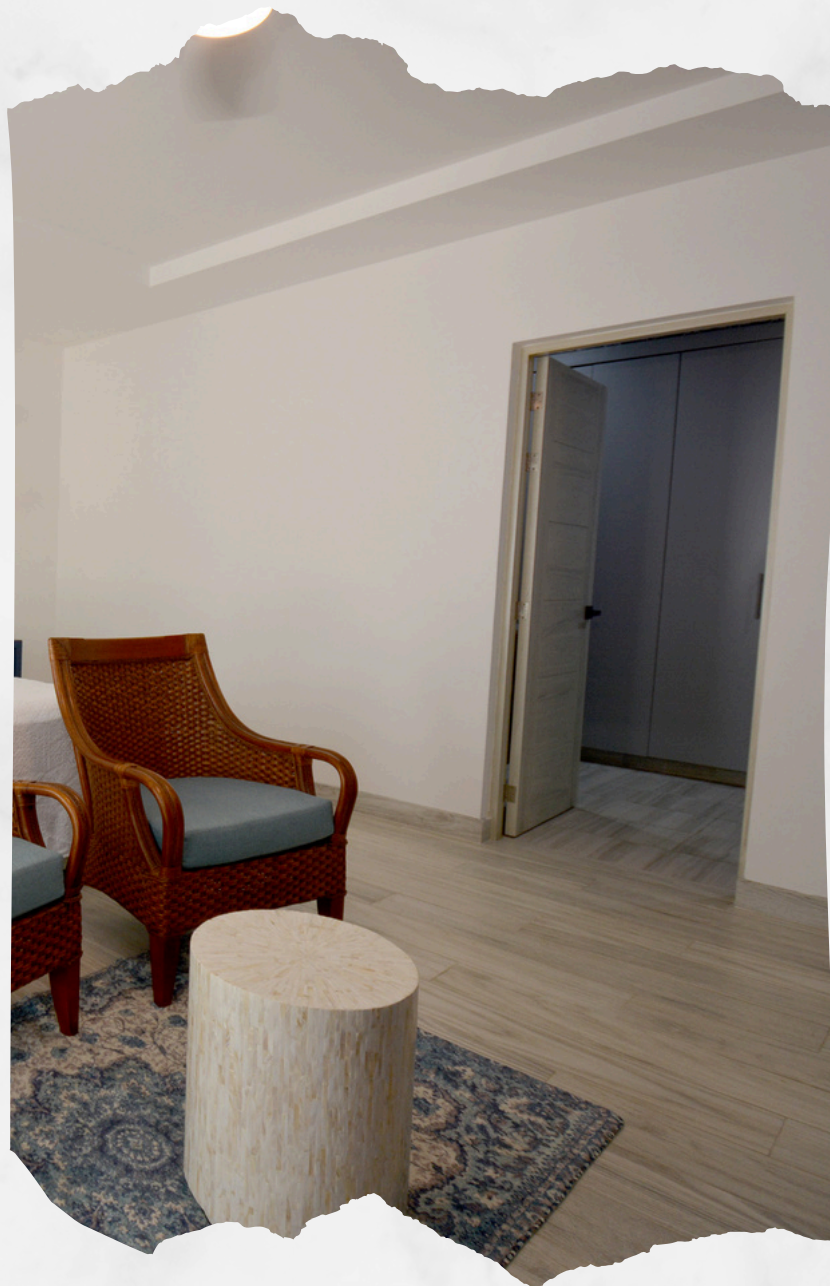


An aerial photograph of a coastline with turquoise water and a sandy beach. A semi-transparent dark grey rectangle is overlaid on the image, containing white text. The text provides details about a luxury home project.

**Luxury Corner Lot Home in Playacar Phase 1**  
**Location: Playacar Phase 1, Playa del Carmen**  
**Lot Size: 600 sq. meters**  
**Construction Area: 404 sq. meters**  
**Type: Luxury Home**  
**Position: Second row from the beach, corner lot**

**4 bedrooms**  
**Spacious and well-lit rooms**  
**with premium finishes**





## 4.5 Bathrooms - Modern and elegantly designed with high-end fixtures.





**Living Room – Open concept living area, perfect for entertaining.**  
**Dining Room – Large dining space, ideal for family gatherings and hosting.**







**Kitchen - Fully equipped gourmet kitchen with top-of-the-line appliances.**



**Private Pool – Enjoy your private pool, surrounded by lush landscaping for privacy and relaxation.**



---

# Playa del Carmen

MEXICO

